



Case Study Blackbird Inn

The Blackbird Inn at Padbury decided to carry out a full restoration of their restaurant. As space was of a premium for the installation of the main switch board, Proteus Industrial Switchgear of Telford were chosen by Advanced Design & Build Ltd from Banbury for their ability to provide the perfect solution. A 3 way 200 amp MC panel board was specified and fitted for the main incoming control and distribution.

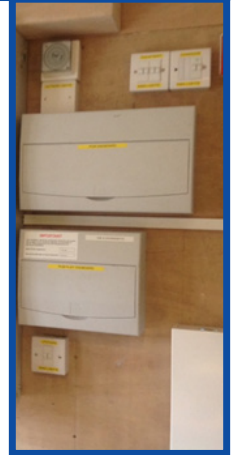
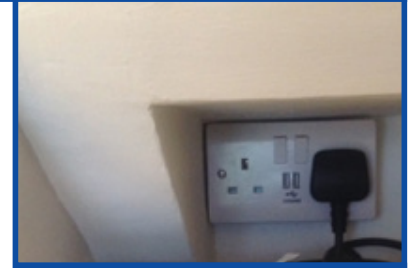
Additionally two M2 split load consumer units were installed with isolator and RCD circuits for both the living and working areas of the business

The new M2 USB twin charging sockets were also used throughout which not only provide usual power socket supplies but are ideal for charging iPads, iPhone etc. with 2 amps combined charging capacity. These versatile sockets do not require deeper wall boxes and will directly replace existing standard outlets.

RPP's range Easy Clip modular accessories also were employed to provide key switches for the emergency lighting circuits.

Garry Webb of Advanced said, "All IMD products used have been easy to work with and install. The support from the manufacturer has also been excellent!"

The restaurant named Four & 20 could be said to contain quite a pie of products from IMD!



MP

01952 292001 | ind@proteusswitchgear.co.uk | www.proteusswitchgear.co.uk